



TAIWAN
EXCELLENCE
2012



GW-1 guestWiFi Account Generator

The Easiest Guest Internet Access Solution for Small and Medium Business, B&B Banking, Service Center and Education.



FEATURE

- 300Mbps high speed wireless gateway/WiFi router
- Compatible with IEEE 802.11 b/g/n Wireless LAN 2T2R
- Support 20 simultaneous users and up to 256 account users
- Web-based authentication and management
- Marketing cooperation includes both customized login page and login page redirection
- Support rich networking functions: IP plug and play, transparent HTTP proxy, and various WAN connections
- Support WPA/WPA2 encryption, administration access control, layer 2 isolation, and SSL login page to enhance security
- Support firewall functions: VPN (IPSec/PPTP/L2TP), PPTP VPN client, and IP/MAC/URL address pass through

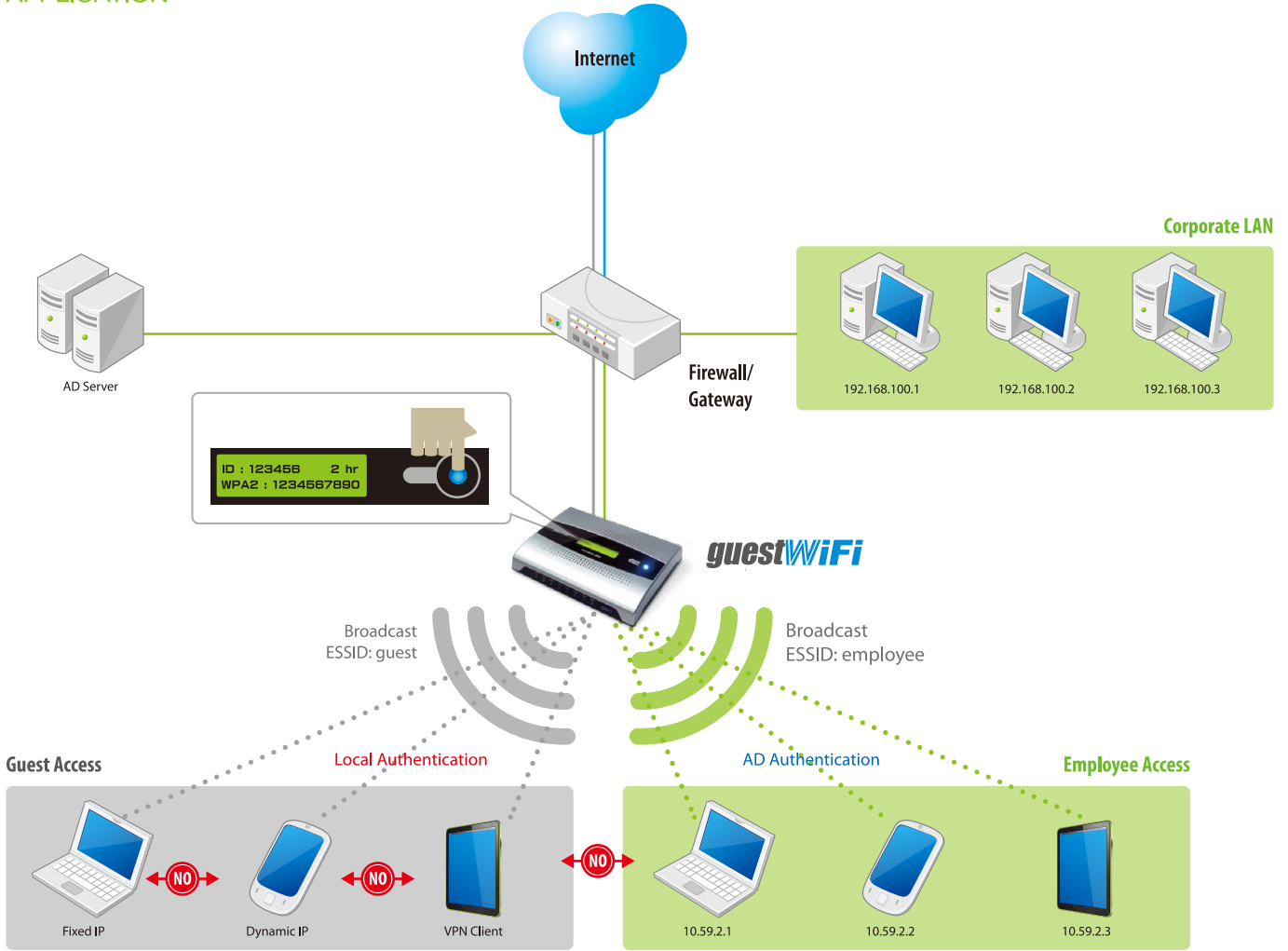
DESCRIPTION

The GW-1 guestWiFi account generator is designed as 300Mbps high speed wireless gateway/WiFi router for enterprises and schools to provide guests a secure WiFi hotspot network in their meeting room, guest lobby and library. It is deployed by MIS simply as adopting IP plug and play technology, all a guest has to do is to generate a guest account with a single click, and with a press of a button the guest ID will be shown on the display instantly. Guests can enjoy high-speed Internet connection and just follow four steps: press the key, find guest SSID, enter WPA2, Open browser & enter ID and surf the Internet. MIS have no need to re-configure any of their device IP settings including DHCP, DNS, proxy, dynamic and static IP address assignments.

The GW-1 enables MIS to secure the Internet access in different network segments for guests and employees as it enhances security and firewall functions by utilizing layer 2 isolation. The GW-1 provides a customizable user-friendly management interface that supports web-based authentication, 20 simultaneous users and up to 256 account users, and marketing cooperation.



APPLICATION



SPECIFICATION

Network specification	IEEE802.3 10Base T Ethernet IEEE802.3u 100Base TX fast Ethernet IEEE802.11n Wireless LAN 300Mbps IEEE802.11g Wireless LAN 54Mbps IEEE802.11b Wireless LAN 11Mbps ANSI/IEEE 802.3 NWay auto-negotiation
Compatibility	All WiFi certificated wireless adapters Support all operation systems
Interface	4 LAN Ports (10Base T/ 100Base Tx auto cross-over) 1 WAN Port (10Base T/ 100Base Tx)
Wireless operation range	Up to 400 feet (outdoor)
Wireless data rate	Up to 300Mbps with auto fall back with IEEE 802.11b/g
Frequency band	2.4 GHz frequency band
Encryption	WPA/WPA2
Power requirement	External power adaptor Input: 100-240 VAC, 50/60 Hz Output: 12V, 1.5Amp
Dimension	(L): 222mm / (W): 143mm / (H): 36mm Weight: about 400g (net)
Environmental conditions	Operating temperature: 0°C to 50°C Storage temperature: -10°C to 60°C Humidity: 10% ~ 90% non-condensing 10% ~ 80% condensing

Mount	Desktop/Wall mounted
IP plug and play	Zero end-user configurations
Concurrent users	20
Authentication	Web-based authentication
Security and firewall	SSL user login page Layer 2 isolation security IP/MAC/URL address pass through VPN (IPSec/PPTP) pass through PPTP VPN client
Management	Session limit, bandwidth limit and QoS Configuration page Web-based management tool TFTP/HTTP firmware upgrade Wizard setup for step-by-step configuration Backup/ Restore configuration file Remote authorized management Real-time session list Syslog (System/ User/ Account) E-mail logs SNMP v1/v2
Marketing cooperation	Standard login page Customizable log-on and log-off pages Information window timer control
Certification	FCC/ CE/ NCC/ C-Tick/Telec certification pending



HANDLINK

Handlink Technologies, Inc.

4F, No. 3, Prosperity Rd. 1, Scienced-Based Industrial Park, Hsinchu 300, Taiwan, R.O.C.

Tel: +886-3-564-5166 Fax: +886-3-564-3922

E-mail: handlinksales@handlink.com.tw

http://www.handlink.com

Copyright © 2006-2015 Handlink Technologies Inc. all Rights Reserved.

